



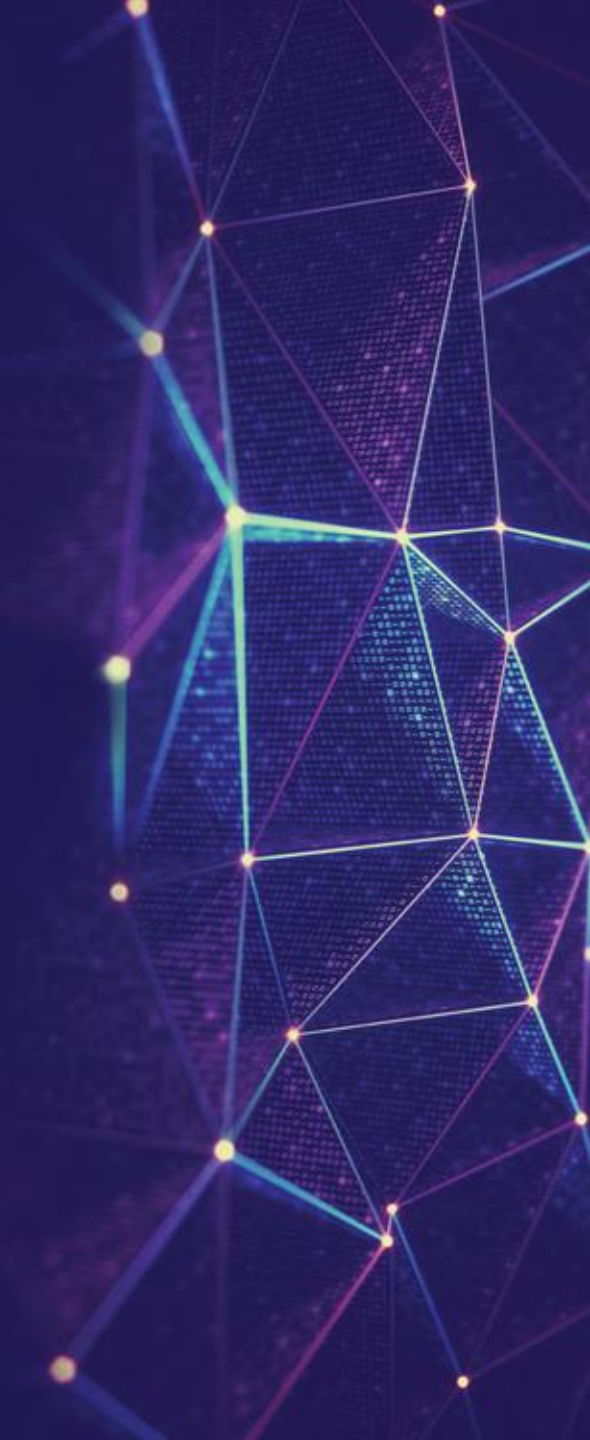
Meijburg & Co
Tax Lawyers

Tax Technology Bites

SAP S/4HANA Advanced Compliance Reporting (ACR)

Virtual MS Teams Session

8 July 2021



First...



**Please mute your
microphone and camera**



**Do you have a question?
Ask it via chat!**

Tax Technology Bites Webinar Series

Theme

Tax Technology Strategy & Roadmap

Tax Process & Controls

ERP Tax Sensitization

Tax Data Management & Intelligence

Tax Compliance

SAP S/4HANA & Tax

Date

11 November 2020

8 December 2020

4 February 2021

4 March 2021

30 March 2021

27 May 2021

S/4HANA Advanced Compliance Reporting 8 July 2021



Introduction presenters



Alexander Zegers

Director

Tax Technology & Transformation
Meijburg & Co.



Roger Haenen

Senior Manager

Tax Technology & Transformation
KPMG Netherlands



Romain Emens

Manager

Tax Technology & Transformation
KPMG Netherlands

Today's Agenda



**Introducing
SAP ACR**



**ACR Live
Demonstration**



**Interactive Q&A /
panel discussion**



**Implementation
Tips**

SAP S/4HANA Dedicated Tax Modules



Document Compliance

Comply with local reporting obligations of exchange of electronic invoices



Communication to (Tax) Authorities



Advanced Compliance Reporting

Manage worldwide statutory reporting obligations

Today's focus

SAP Cloud Platform



Transactions

Analytics



SAP Tax service

Tax determination /integration to partner tax engines



Internal Controls

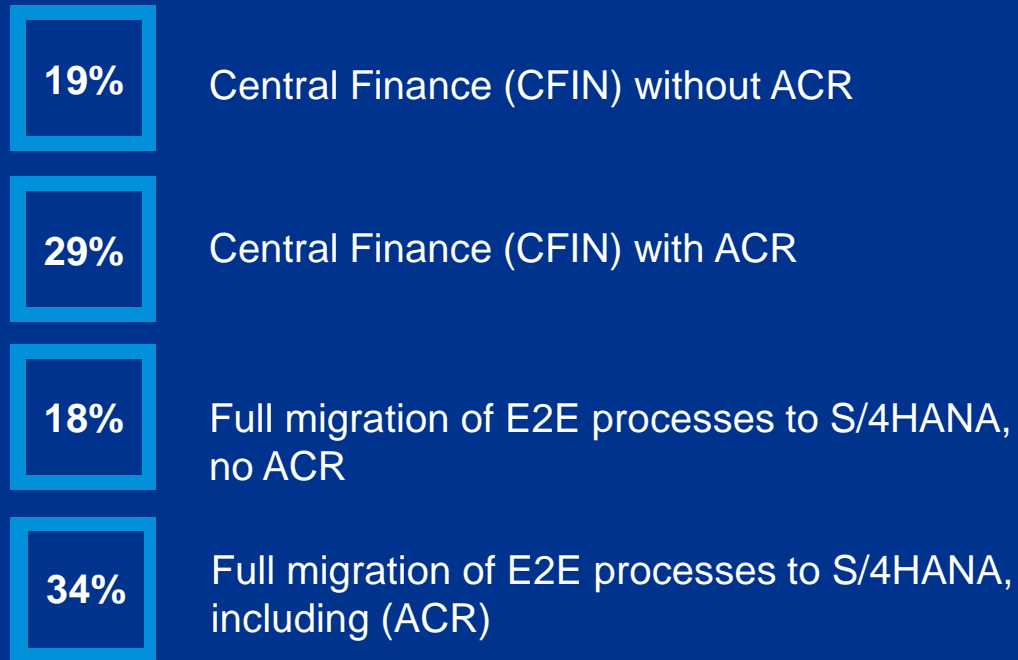


SAP Tax Compliance

Identify, analyze and manage incorrect tax data

From our previous TT Bite session (S/4HANA)

What is the (envisaged) scope of your current S/4HANA implementation for Tax?



SAP Advanced Compliance Reporting (ACR)

SAP Advanced Compliance Reporting is SAP's latest response to managing tax compliance

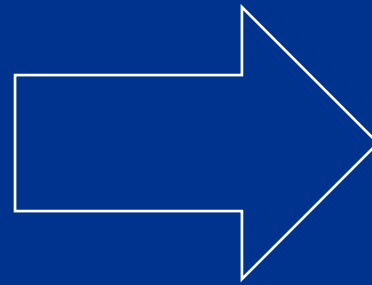
- The reports are enabled through the **SAP FIORI Launchpad**
- They have a cleaner and more user-friendly experience.
- It comes with 3 main components:
 - **Definition**
 - **Configuration**
 - **Running**
- ACR contains **country and region specific tax reports** that are pre-defined
- The number of reports available is dependent on your S/4 HANA or CFIN version, cloud or on-premise.
- SAP's prime intention for ACR is providing coverage for **indirect taxes and withholding taxes** – not corporate tax

ACR Basic versus ACR Advanced: key differences

SAP Advanced Compliance Reporting has two options listed below.

ACR Basic (Free)

- ✓ Single framework for all statutory reporting with dashboard to monitor status
- ✓ Ability to prepare reports in different formats (XML, TXT, PDF, JSON)
- ✓ Generate correction runs
- ✓ Business Partner Correspondence
- ✓ Flexible Reporting Levels
- ✓ Ad-hoc Reporting
- ✓ Collaboration via Co-pilot integration
- ✓ Enablement of Tax Payable Postings



ACR Advanced (Licensed)

- ✓ All ACR Basic functionalities
- ✓ 'Extensibility Using Define Advanced Compliance Reports (Design time tool)
- ✓ Embedded Analytics
- ✓ End-to-End reporting process through Reporting Activities
- ✓ Manage Tax Item to adjust the data selection
- ✓ Manual Adjustments
- ✓ Global Compliance Dashboard
- ✓ Due date adjustment
- ✓ Workflow for submission
- ✓ SAP Tax Compliance integration

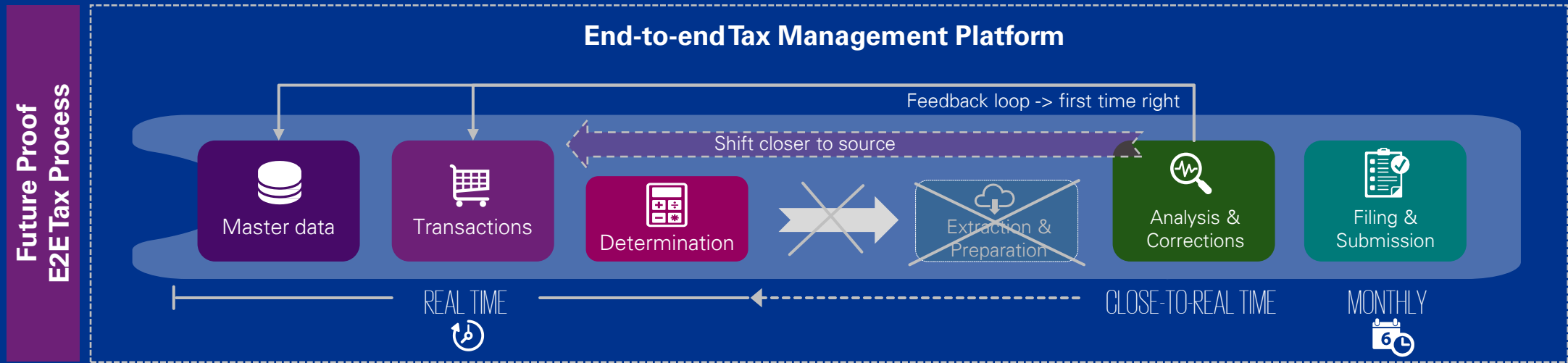
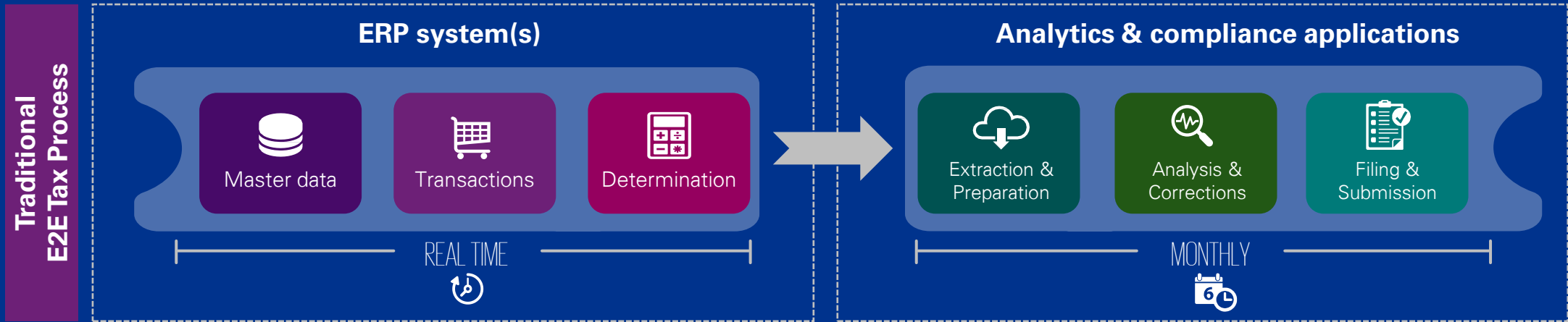
Live ACR Demonstration

The screenshot shows the SAP Fiori 'Home' dashboard for Advanced Compliance Reporting. The top navigation bar includes 'Output Control', 'Business Event Handling', 'Message Monitoring', 'Advanced Compliance Reporting', 'Analytics for Belgium', and 'Reporting for Belgium'. The main content area features several tiles: 'Define Compliance Reports' with a count of 182, 'Report Definitions', 'Analytics for Belgium', 'Run Compliance Reports Belgium AP Analytics' with a count of 0, 'Report Generic Withholding Tax Belgium', 'Reporting for Belgium', 'Prepare Balance of Payments Belgium', 'Create Annual Sales Listing Belgium', 'Run Compliance Reports Belgium GL Reporting' with a count of 26, and 'Run Compliance Reports' with a count of 112.

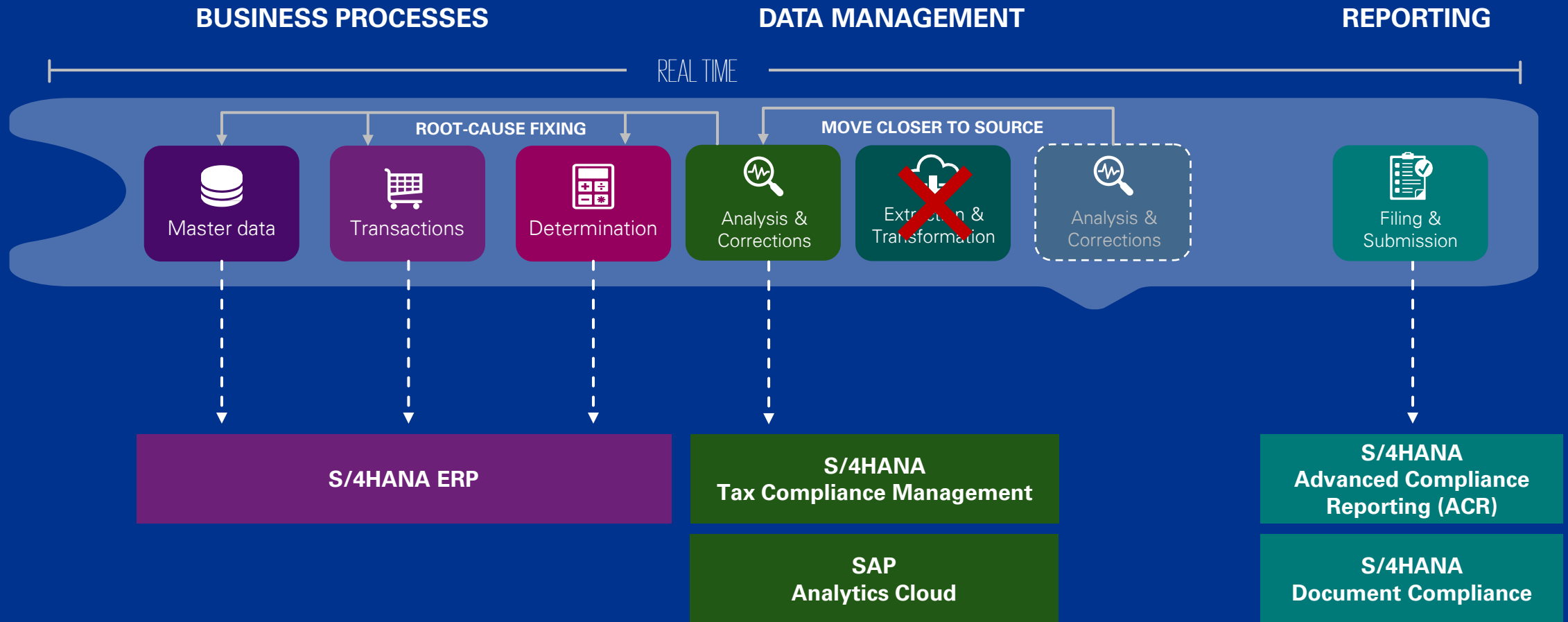
The screenshot shows the 'Run Advanced Compliance Reports' dashboard. It includes a search bar with filters for 'Reporting Status' (set to 'Overdue'), 'Submission Due Date' (02.07.2017 - 30.09.2017), 'Report Name', 'Reporting Entity Name', 'Reporting Year', and 'Country'. Below the search bar is a table titled 'Advanced Compliance Reports (89)'. The table has the following columns: Reporting Status, Submission Due Date, Report Name, Reporting Year, Reporting Period, Current Reporting Phase, Reporting Progress, Current Activity Name, and Reporting Entity Name.

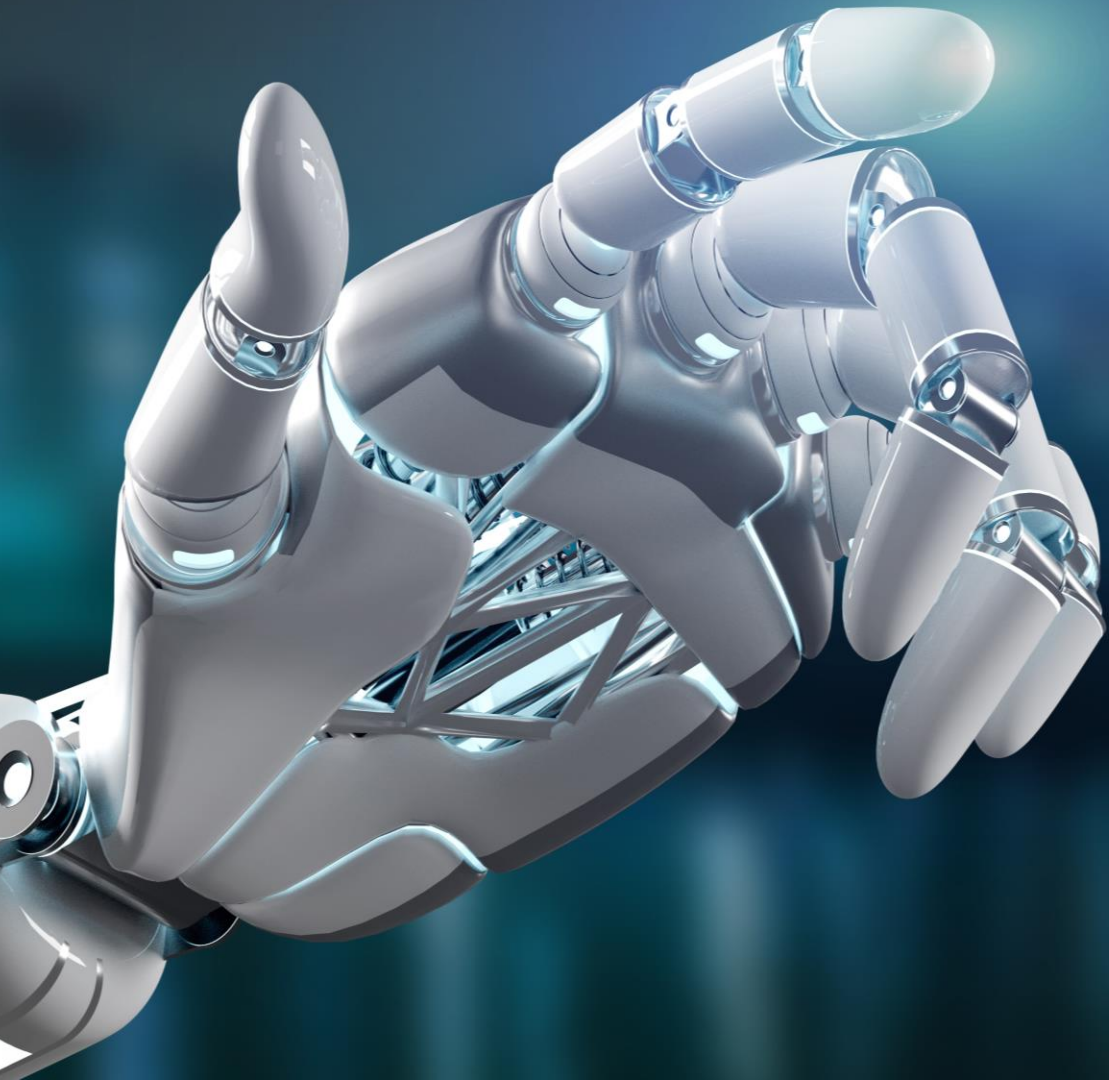
Reporting Status	Submission Due Date	Report Name	Reporting Year	Reporting Period	Current Reporting Phase	Reporting Progress	Current Activity Name	Reporting Entity Name
Overdue 550 Days	15.07.2017	Belgium Balance of Payments - FOLMER	2017	01.06.2017 - 30.06.2017	Declaration	0 of 1	None	Belgium reporting entity
Overdue 550 Days	15.07.2017	Belgium Balance of Payments - FQCCMS	2017	01.06.2017 - 30.06.2017	Declaration	0 of 1	None	Belgium reporting entity
Overdue 550 Days	15.07.2017	Belgium Balance of Payments - SO3CCR	2017	01.06.2017 - 30.06.2017	Declaration	0 of 1	None	Belgium reporting entity
Completed	20.07.2017	Belgium EC Sales List	2017	01.06.2017 - 30.06.2017	None	100%	None	Belgium reporting entity
Overdue 540 Days	25.07.2017	Netherlands EC Sales List	2017	01.06.2017 - 30.06.2017	Declaration	0 of 2	None	Reporting Entity Netherlands
Overdue 533 Days	01.08.2017	Belgium Balance of Payments - FOLDGS	2017	01.07.2017 - 31.07.2017	None	0 of 1	None	Belgium reporting entity
Overdue 519 Days	15.08.2017	Belgium Balance of Payments - FOLMER	2017	01.07.2017 - 31.07.2017	Declaration	0 of 1	None	Belgium reporting entity
Overdue 519 Days	15.08.2017	Belgium Balance of Payments - SO3CCR	2017	01.07.2017 - 31.07.2017	Declaration	0 of 1	None	Belgium reporting entity

Towards Tax Compliance by Design



Positioning ACR as part of the E2E process





Interactive Q&A / Panel Discussion

Panel discussion

We have heard rumors about the pricing/costing of ACR?
What is your view on this?

SAP has made numerous previous efforts with regard to tax automation services.
What is your view on this with regard to SAP ACR?

What are the main benefits and downsides / considerations with regard to ACR in KPMG's view?



Panel discussion

Are there differences when we implement SAP Central Finance instead of SAP S/4?

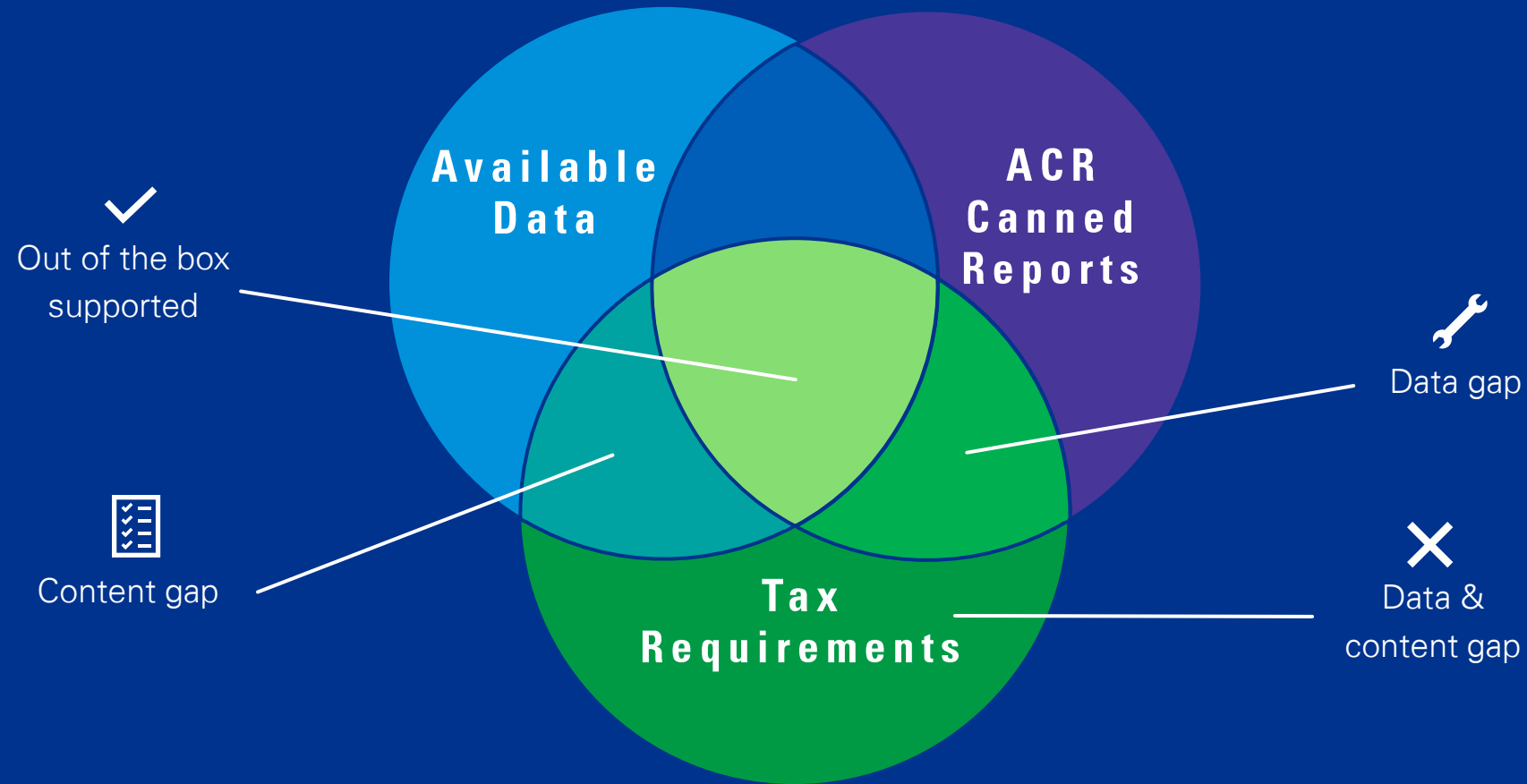
What are key elements that we should keep in mind when we are making a business case for ACR?

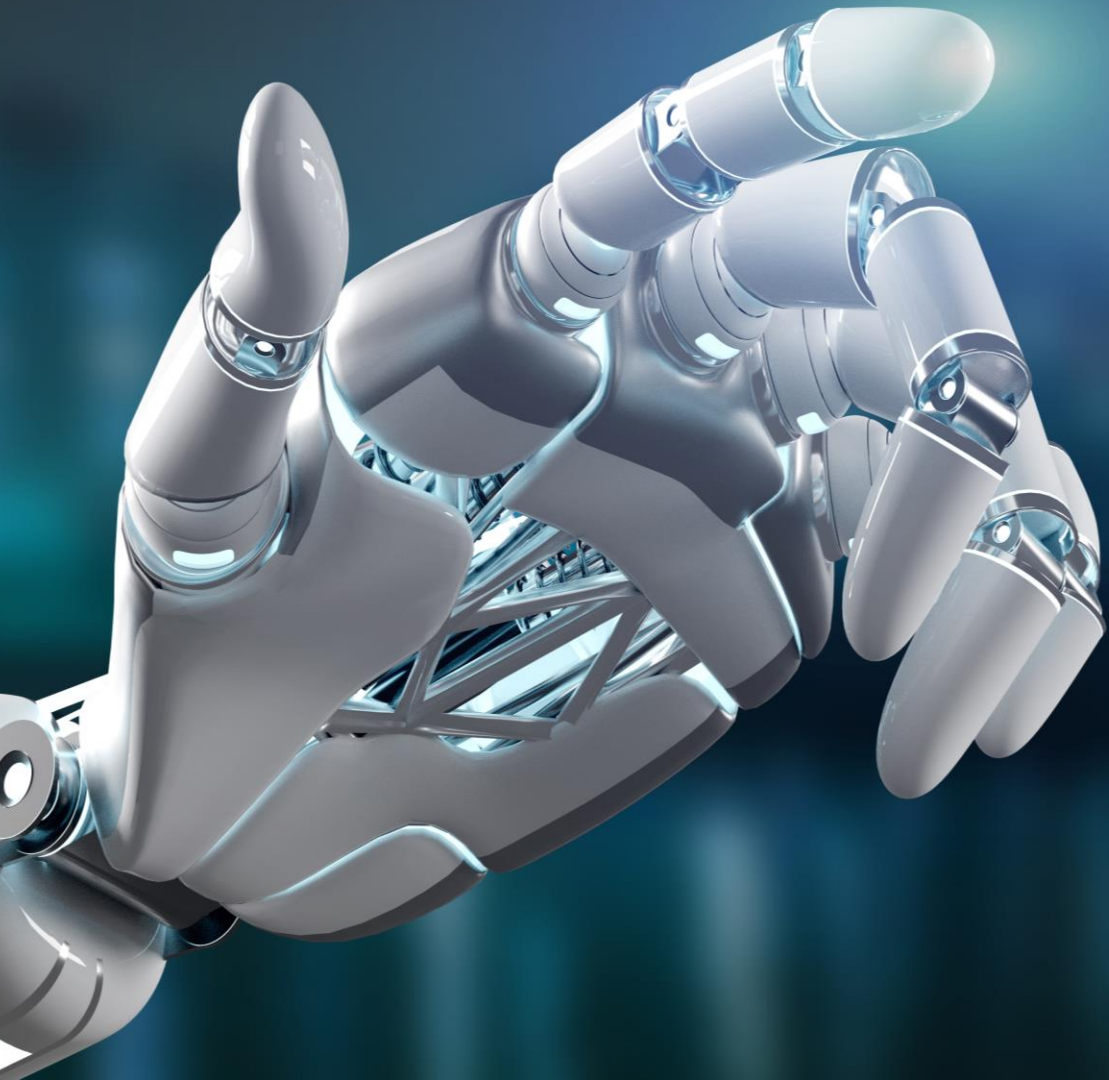
How does ACR compare to the current market leading compliance solution technology vendors?

What expertise should we onboard when conducting an ACR implementation?
What are best practices and pitfalls in such an implementation?



SAP ACR & Data Management





ACR Implementation Tips

A recipe for a successful implementation



Make sure there's a **strong business case**



It's essential to have a complete understanding the **tax reporting requirements**



An ACR implementation is not solely about technology but primarily about **data management and compliance processes**



Setup a **dedicated Tax workstream** which takes ownership of defining the tax requirements and ensuring that these requirements are properly built



Leverage **global tax & reporting knowledge** or **pre-built tax data assets** for reporting gaps, rather than building new reporting inhouse



What's next - Tax Compliance Management

Stay tuned!

Theme

Tax Technology Strategy & Roadmap

Tax Process & Controls

ERP Tax Sensitization

Tax Data Management & Intelligence

Tax Compliance

SAP S/4HANA & Tax

S/4HANA Advanced Compliance Reporting

S/4HANA Tax Compliance Management

Date

11 November 2020

8 December 2020

4 February 2021

4 March 2021

30 March 2021

27 May 2021

8 July 2021

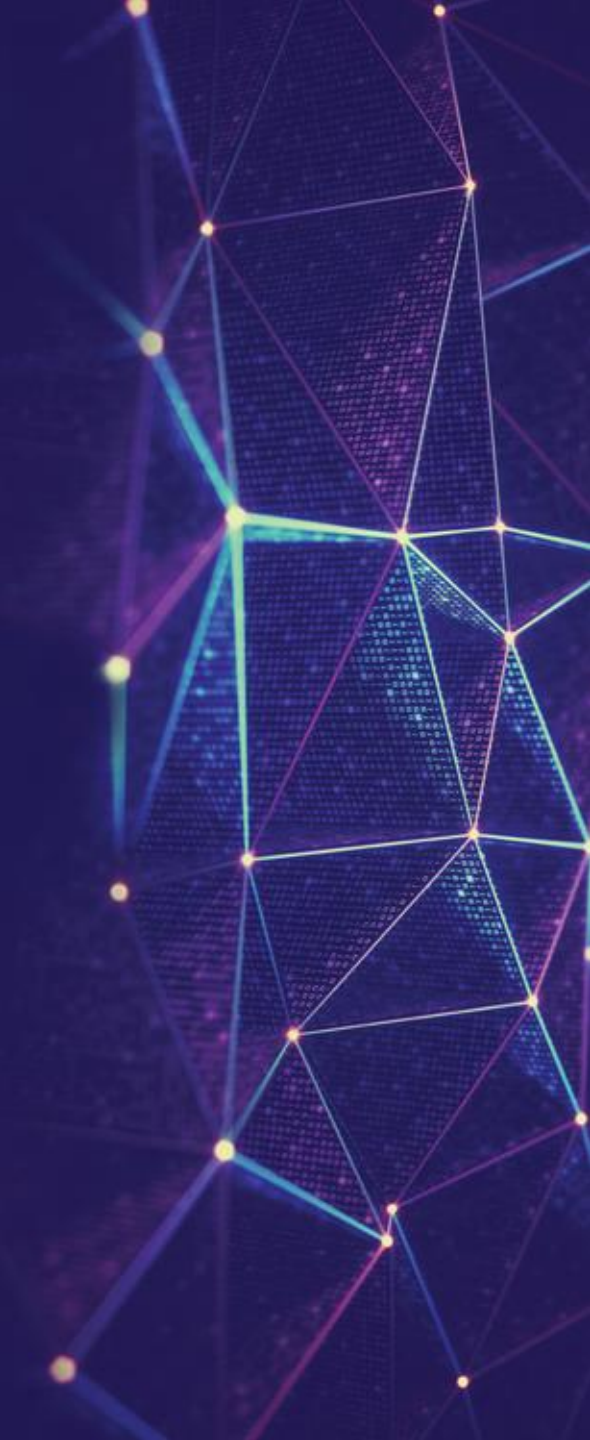
September/October





Meijburg & Co
Tax Lawyers

Thank you





Meijburg & Co
Tax Lawyers



KPMG on social media



KPMG app

All activities performed and all services rendered by Meijburg & Co are subject to its general terms and conditions, filed with the Dutch Chamber of Commerce.

Meijburg & Co, Tax & Legal, is an association of limited liability companies under Dutch law, registered under Chamber of Commerce registration number 53753348 and is a member of KPMG International Limited, an English private company limited by guarantee.

The general terms and conditions are available on the Meijburg & Co website (<http://www.meijburg.com/termsandconditions>) and will be supplied upon request.