



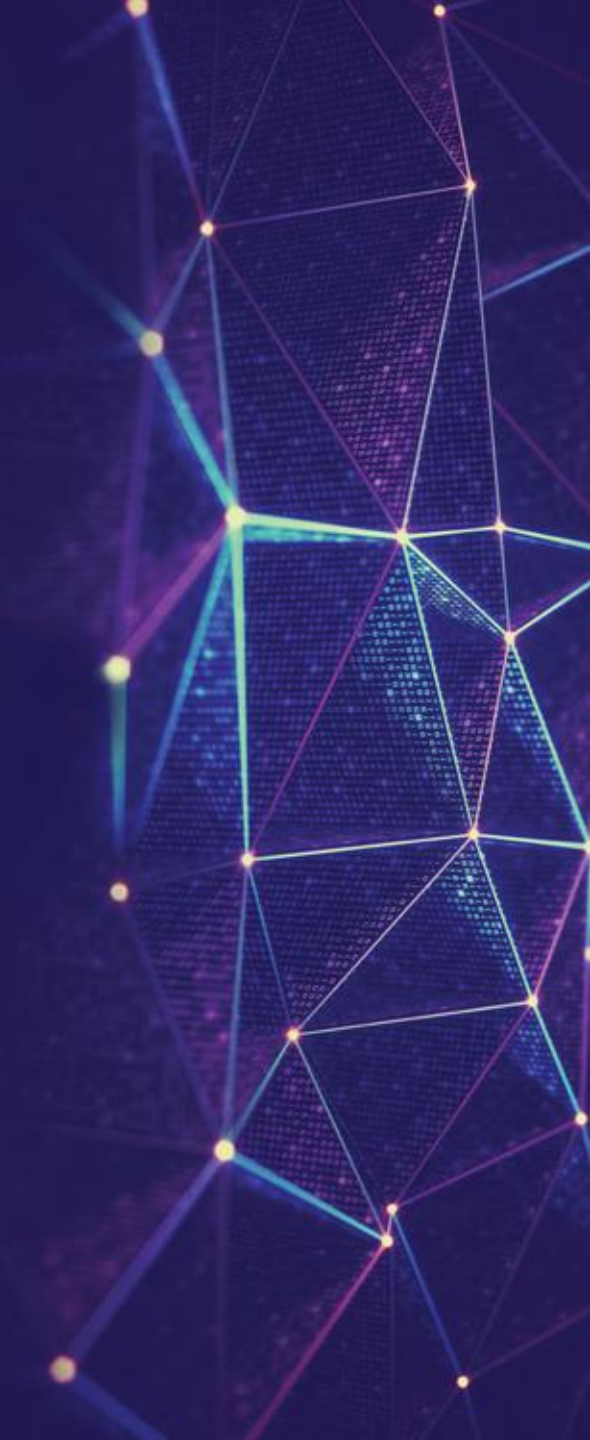
Meijburg & Co
Tax Lawyers

Tax Technology Bites

Session 5 | Tax Compliance

Virtual MS Teams Session

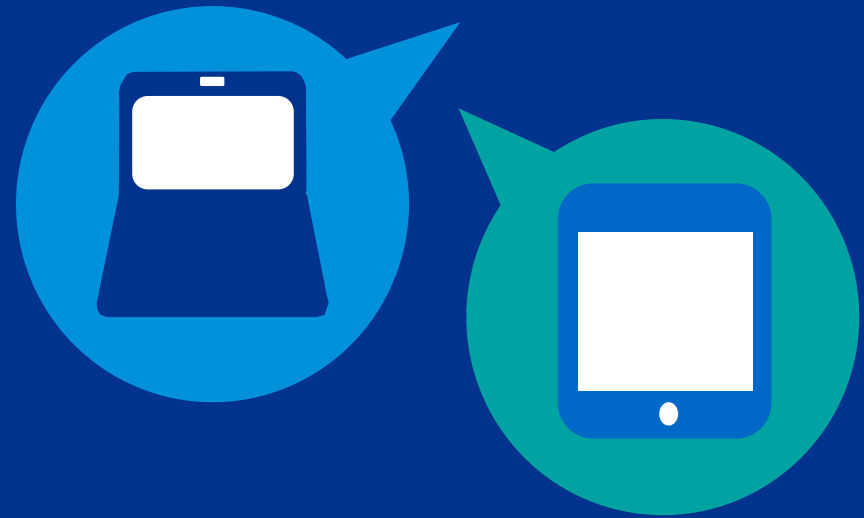
30 March 2021



First...



**Please mute your
microphone and camera**



**Do you have a question?
Ask it via chat!**

Tax Technology Bites Webinar Series

Theme

Tax Technology Strategy & Roadmap

Tax Process & Controls

ERP Tax Sensitization

Tax Data Management & Intelligence

Tax Compliance

SAP S/4 HANA and SAP Central Finance

Client session

11 November 2020

8 December 2020

4 February 2021

4 March 2021

30 March 2021

27 May 2021



Introduction presenters



Lars Haringsma

Senior Manager
Indirect Tax and Tax
Technology &
Transformation
Meijburg & Co.



Aysha Sammy

Director
Global Compliance &
Transformation
Meijburg & Co.



Frank
Metsemakers

Senior Manager
Global Compliance &
Transformation
Meijburg & Co.



Carina Ruijten

Manager
Indirect Tax and Tax
Technology &
Transformation
Meijburg & Co.



Joris van Iersel

Senior Consultant
Tax Technology &
Transformation
KPMG Advisory

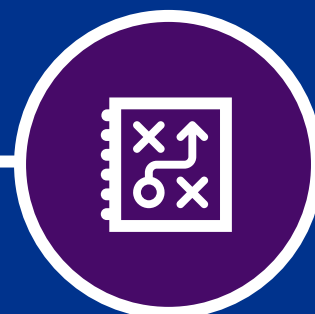
Today's Agenda



**Global tax
compliance trends**



**Tax compliance
strategy**



**Last mile tax
compliance reporting**

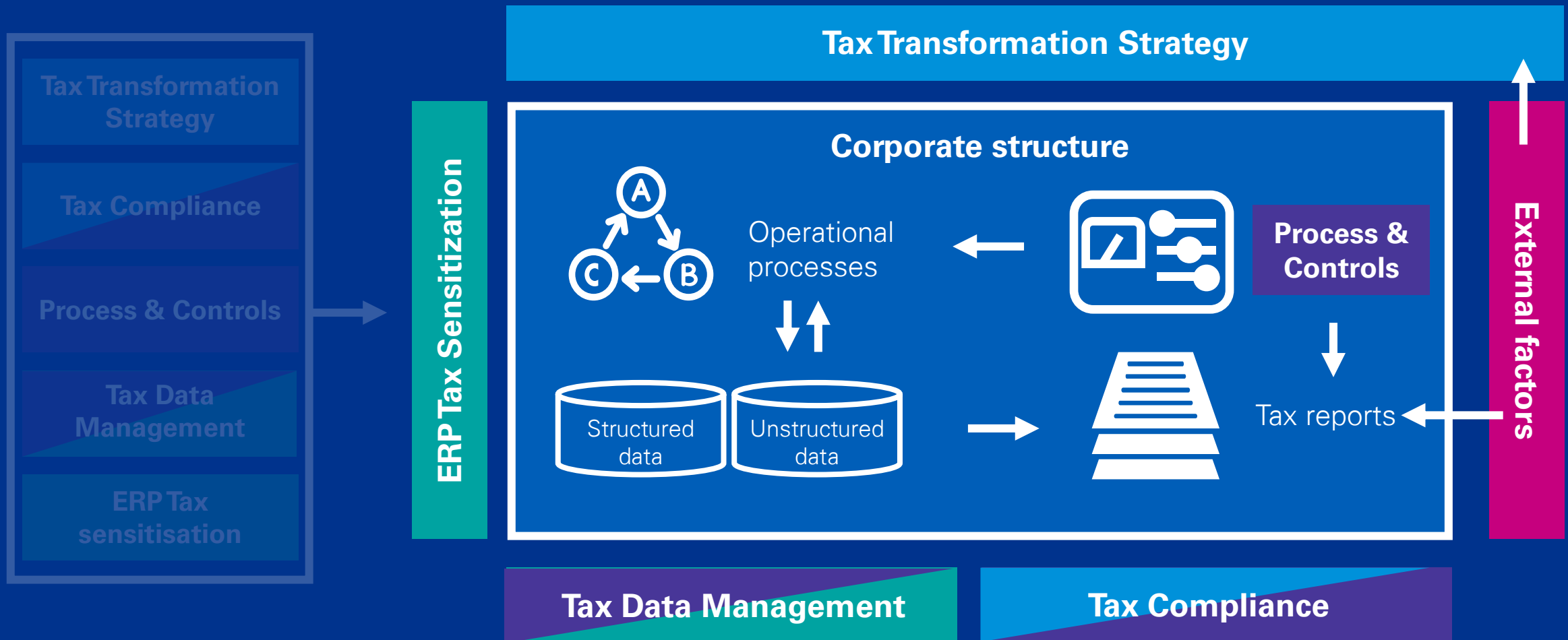


**End-to-end tax
compliance reporting**



Key takeaways

Compliance as an end goal for tax management



Today's Agenda



**Global tax
compliance trends**



**Tax compliance
strategy**



**Last mile tax
compliance reporting**



**End-to-end tax
compliance reporting**



Key takeaways

External factors



Political

- Globalization versus localization
- Tax transparency and responsibility
- Tax Administration 3.0
- COVID-19



Technology

- Data extraction / transformation
- Data analytics
- Reporting



Regulation

- Compliance becomes more (nearly) real time and data driven
- Digitalization of tax
- Utilization of technology



Economy

- Budget constraints
- Insourcing, co-sourcing or outsourcing?
- Invest in Tax or IT?

Challenges are not as unique as you think ...



“Too many highly skilled tax professionals are performing non-value-adding manual manipulation of poor quality data.”

“We are increasingly faced with real time reporting. How can we better prepare for, and deal with this?”

“We are too busy managing the compliance workload to find the time to analyze and optimize our tax function processes.”

“We rather see tax experts add value, e.g. analyze and interpret data for decision making and strategy.”

“We are not aware of the full potential of ‘Tax Technology’. How deeply involved and tech savvy should tax professionals be?”

“We are considering what skills are required in a fit for future tax function. Do we need tax experts with IT skills or IT experts with tax skills?”



What do we see with our clients?

- Gather input on setting up the global tax function, including transformation support.
- Advice on whether to insource, co-source or outsource compliance formalities.
- Gain global insight into compliance obligations.
- Identify opportunities to combine different reporting areas (e.g. indirect tax, direct tax, financial statements, transfer pricing).
- Receive support in setting up an end-to-end compliance model (from data to reporting), including the use of available systems and technology. The challenge here is how to cope with structured / unstructured data, data quality, data collection and the transfer of data.

Polling question

What is your biggest challenge in terms of tax compliance?

A

Data quality (41%)

B

Use of technology (27%)

C

Stay up to date on global tax compliance obligations (11%)

D

Use and capabilities of FTEs (6%)

E

Be in control (13%)



Today's Agenda



Global tax
compliance trends



Tax compliance
strategy



Last mile tax
compliance reporting



End-to-end tax
compliance reporting



Key takeaways

Polling statement

Tax Compliance is a key component of your Tax Strategy.

A

Yes, absolutely. (78%)

B

Yes, it is included but not considered a key component. (21%)

C

No, it is not included. (1%)



Your strategy for global tax compliance

Three main questions



Where to start?



How to prioritize?



What to invest in?

Four different angles



| Baseline



| In-, co-, or outsourcing

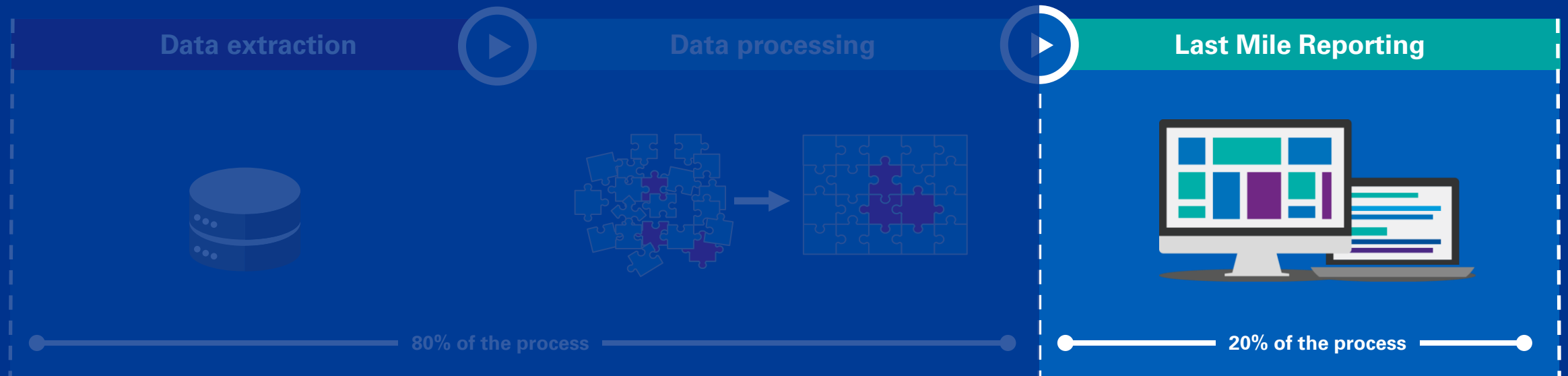


| Standardization



| Technology

End-to-end Tax Compliance Reporting Process



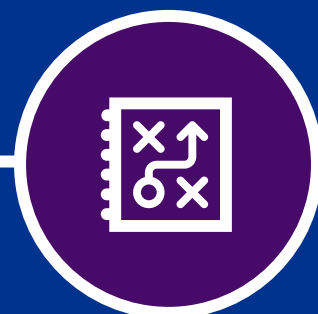
Today's Agenda



Global tax
compliance trends



Tax compliance
strategy



Last mile tax
compliance reporting



End-to-end tax
compliance reporting



Key takeaways

Global Compliance Management Services



Coordinate compliance

- Gain insight in compliance requirements
- Digital Gateway as monitoring tool
- Collaboration 147 KPMG Member Firms and KPMG compliance centers



Standardize compliance

- Data extraction and transfer
- Use of KPMG Delivery Centers (e.g. KGSH in Budapest, ACDC in Kuala Lumpur)
- Standard approach and deliverables
- Improvements in quality data and compliance



Transform compliance

- Anticipate on changes business model e.g. finance transformation
- Mergers and acquisitions
- Reorganizations
- Change / update ERP system
- Tailor made solution for all clients



Role KPMG teams

- PMO involved in all workstreams
- Local KPMG teams and Delivery Centers are involved in the day-to-day preparation and submission
- Collaboration between PMO and local KPMG teams / Delivery Centers

Global Compliance Management Services



Coordinate compliance

- Gain insight in compliance requirements
- Digital Gateway as monitoring tool
- Collaboration 147 KPMG Member Firms and KPMG compliance centers



Standardize compliance

- Data extraction and transfer
- Use of KPMG Delivery Centers (e.g. KGSH in Budapest, ACDC in Kuala Lumpur)
- Standard approach and deliverables
- Improvements in quality data and compliance



Transform compliance

- Anticipate on changes business model e.g. finance transformation
- Mergers and acquisitions
- Reorganizations
- Change / update ERP system
- Tailor made solution for all clients



Role KPMG teams

- PMO involved in all workstreams
- Local KPMG teams and Delivery Centers are involved in the day-to-day preparation and submission
- Collaboration between PMO and local KPMG teams / Delivery Centers

Global Compliance Management Services



Coordinate compliance

- Gain insight in compliance requirements
- Digital Gateway as monitoring tool
- Collaboration 147 KPMG Member Firms and KPMG compliance centers



Standardize compliance

- Data extraction and transfer
- Use of KPMG Delivery Centers (e.g. KGSH in Budapest, ACDC in Kuala Lumpur)
- Standard approach and deliverables
- Improvements in quality data and compliance



Transform compliance

- Anticipate on changes business model e.g. finance transformation
- Mergers and acquisitions
- Reorganizations
- Change / update ERP system
- Tailor made solution for all clients



Role KPMG teams

- PMO involved in all workstreams
- Local KPMG teams and Delivery Centers are involved in the day-to-day preparation and submission
- Collaboration between PMO and local KPMG teams / Delivery Centers

Global Compliance Management Services



Coordinate compliance

- Gain insight in compliance requirements
- Digital Gateway as monitoring tool
- Collaboration 147 KPMG Member Firms and KPMG compliance centers



Standardize compliance

- Data extraction and transfer
- Use of KPMG Delivery Centers (e.g. KGSH in Budapest, ACDC in Kuala Lumpur)
- Standard approach and deliverables
- Improvements in quality data and compliance



Transform compliance

- Anticipate on changes business model e.g. finance transformation
- Mergers and acquisitions
- Reorganizations
- Change / update ERP system
- Tailor made solution for all clients



Role KPMG teams

- PMO involved in all workstreams
- Local KPMG teams and Delivery Centers are involved in the day-to-day preparation and submission
- Collaboration between PMO and local KPMG teams / Delivery Centers

Monitoring compliance

Digital Control Tower
Analytical views of the areas you care most about, summarized by Value, Compliance and Risk.

The dashboard features several data visualization components: a world map with regional highlights, a bar chart showing performance across categories, and a detailed table for 'Direct Compliance Health' with the following data:

Category	2019	2020	2021	2022
1551 Total Filings	142	223	608	578
Direct Tax Returns	5	16	55	20
Family Company Compliance	13	21	54	10
Family Tax Payments	7	8	15	6

Navigation icons at the bottom include: Launchpad, Collaboration, Structures, and What's New in Tax.

KPMG Digital Gateway Overview | K-Demo Inc and Subs | KT

Open Workflows
41 Workflows: 22 Past Due, 0 Due Soon, 19 On Track

My Tasks

- Corporate Tax Return: Collect data for tax filing preparation (Due 30 days ago)
- Local Income Tax Return: Collect data for tax filing preparation (Due 24 days ago)
- Local Income Tax Return: Prepare draft tax filings (Due 15 Jun 2020)
- Corporate Tax Return: Approve tax filings and payment details (Due 30 Jun 2020)
- Sales & Use Tax: Review tax filings (Due 15 Jul 2020)

Across 6 Services

- Direct: Corporate Tax Return, Local Income Tax Return
- Indirect: Consumption Tax - Annual, Sales & Use Tax, VAT
- Withholding: Withholding Tax

Geographic Legend:

- Asia-Pacific: Australia, China, India, Japan, Korea, South, Malaysia, Russian Federation, Singapore
- Americas: Brazil, Canada, Mexico, United States
- Europe, the Middle East, and Africa: Finland, France, Germany, Ireland, Netherlands, Nigeria, South Africa, United Kingdom



Computer



Tablet



Smartphone

Today's Agenda



Global tax
compliance trends



Tax compliance
strategy



Last mile tax
compliance reporting

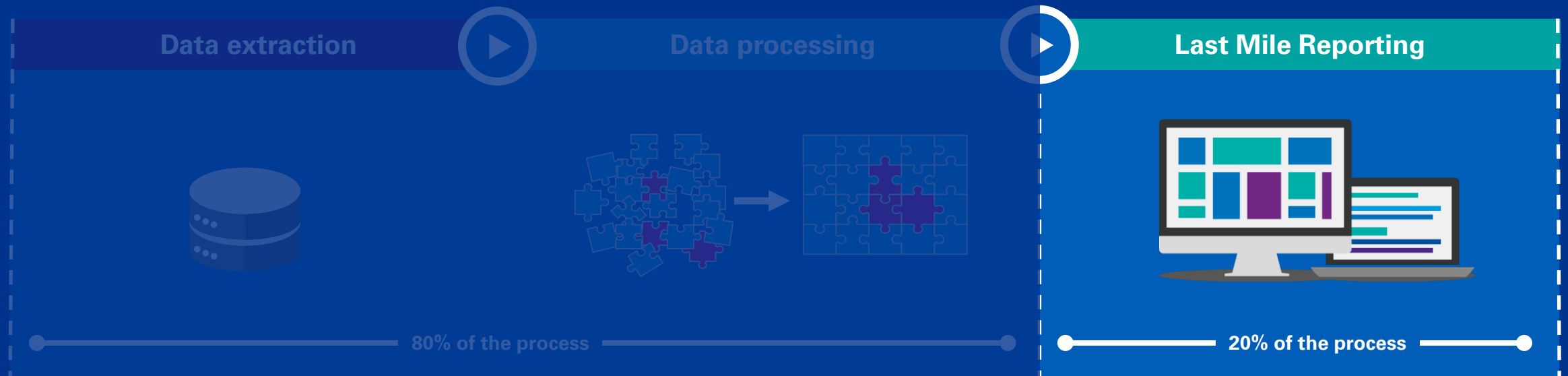


End-to-end tax
compliance reporting



Key takeaways

End-to-end Tax Compliance Reporting Process



Polling question

Which part of the tax compliance process requires the most (manual) effort?

A Data extraction / gathering

B Data cleansing

C Preparation of returns

D Submission of returns

E Monitoring

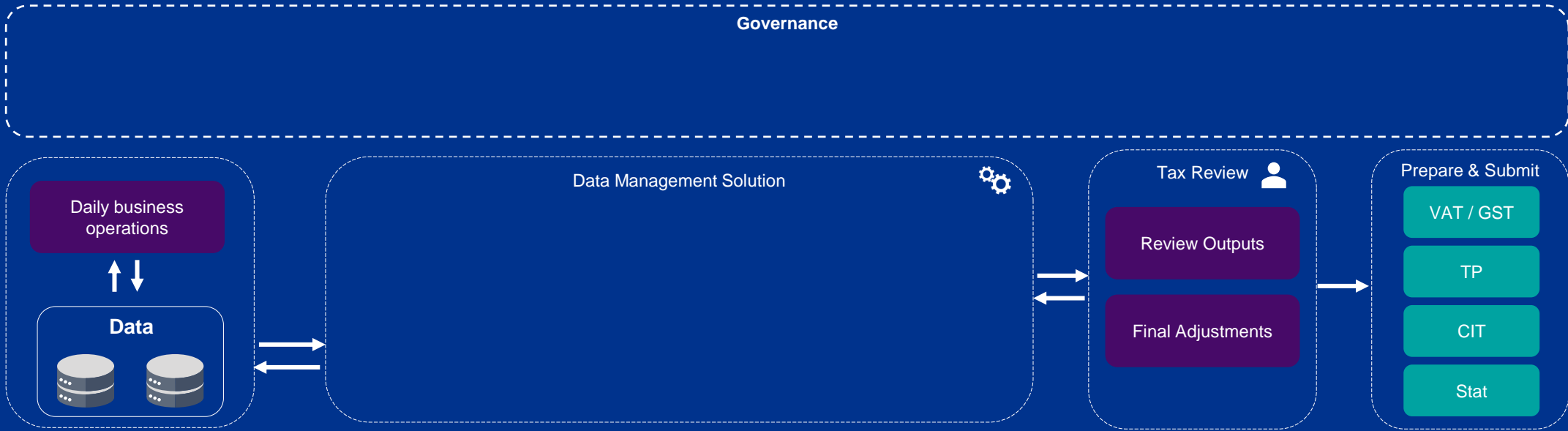


End to End Tax Compliance

Automation

Data Management

Process



End to End Tax Compliance

Automation

Data Management

Process

Governance

Tax Calendar

Compliance Overview

Workflows

Provisions & Payments

Tax & Legislation
News

Management
Reporting

Daily business
operations



Data



Data Management Solution



Tax Review 

Review Outputs

Final Adjustments

Prepare & Submit

VAT / GST

TP

CIT

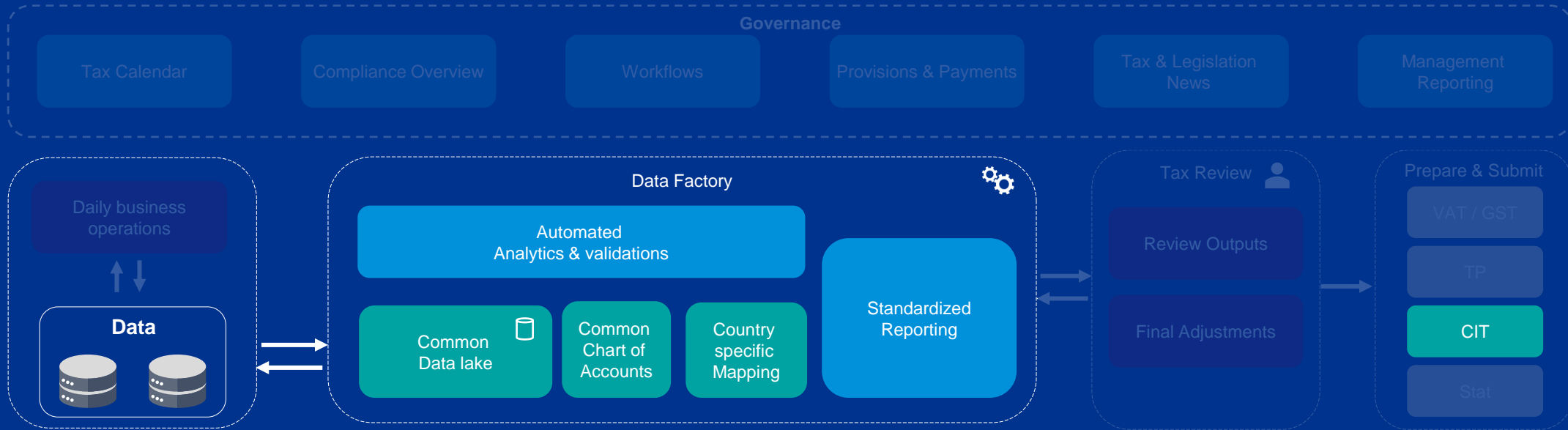
Stat

End to End Tax Compliance: Client case

Automation

Data Management

Process

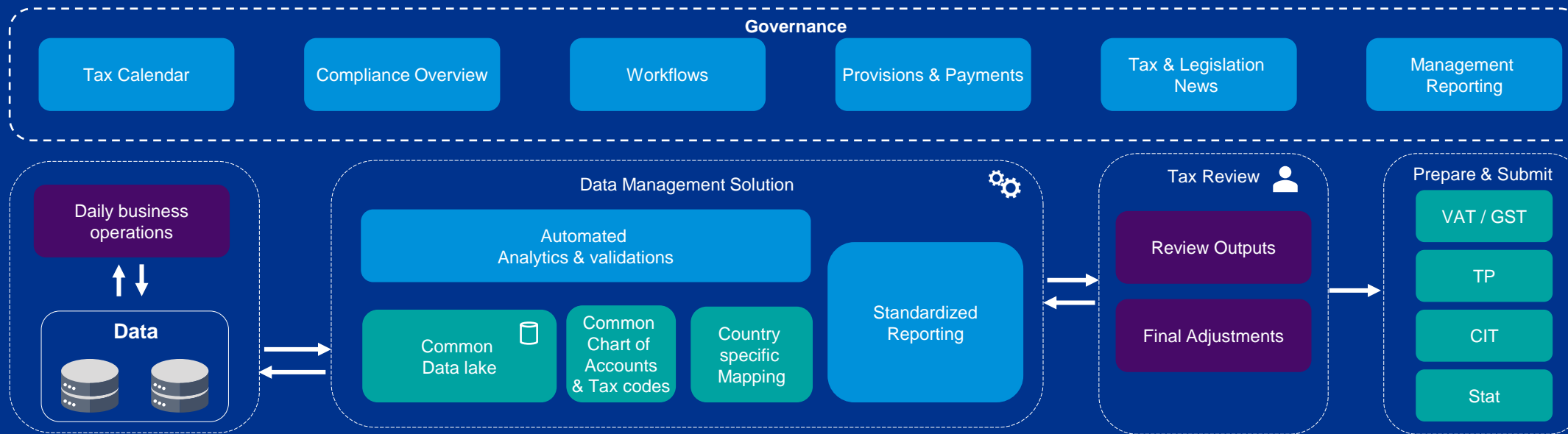


End to End Tax Compliance

Automation

Data Management

Process



Examples



Today's Agenda



Global tax
compliance trends



Tax compliance
strategy



Last mile tax
compliance reporting



End-to-end tax
compliance reporting



Key takeaways

Key takeaways

External factors impact your tax compliance processes.



Tax Compliance should be a key component of your Tax Strategy.



Tax compliance is more than just the preparation and submission of returns.



Technology enabled solutions can assist in your end-to-end tax compliance process.



Questions?



Tax Technology Bites Webinar Series

Theme

Tax Technology Strategy & Roadmap

Tax Process & Controls

ERP Tax Sensitization

Tax Data Management & Intelligence

Tax Compliance

Client session

11 November 2020

8 December 2020

4 February 2021

4 March 2021

30 March 2021

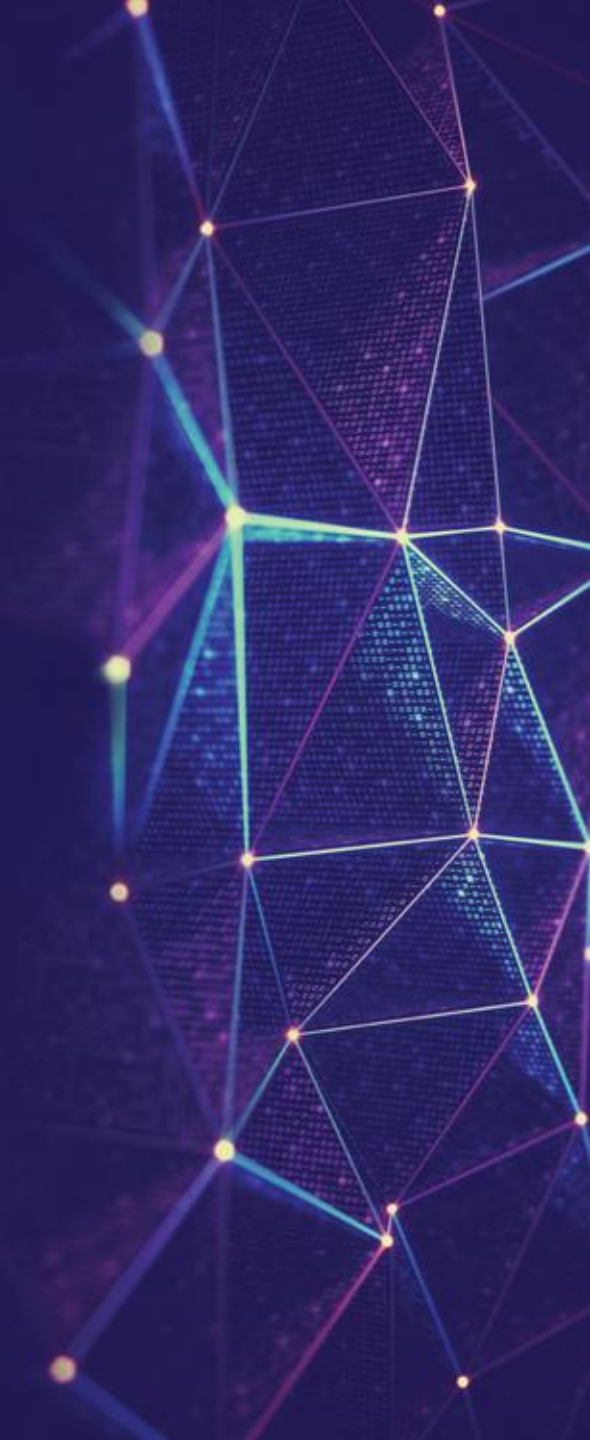
SAP S/4 HANA and SAP Central Finance 27 May 2021





Meijburg & Co
Tax Lawyers

Thank you





Meijburg & Co

Tax Lawyers



KPMG on social media



KPMG app

All activities performed and all services rendered by Meijburg & Co are subject to its general terms and conditions, filed with the Dutch Chamber of Commerce.

Meijburg & Co, Tax & Legal, is an association of limited liability companies under Dutch law, registered under Chamber of Commerce registration number 53753348 and is a member of KPMG International Limited, an English private company limited by guarantee.

The general terms and conditions are available on the Meijburg & Co website (<http://www.meijburg.com/termsandconditions>) and will be supplied upon request.