

# Continuous monitoring

The Dutch tax authorities require organizations to be in control of their tax. To check this they perform random statistical sampling. Partly on the basis of the results of this, it can be determined how an organization should be monitored. Are you properly prepared for any audits the Dutch tax authorities may perform? And how can you efficiently optimize and monitor tax processes, without this taking up a lot of extra time? The solution to taking control of your tax position is called 'continuous monitoring'.

## How does continuous monitoring work?

The method is comparable to random statistical sampling as used by the Dutch tax authorities. However, performing a full random statistical sampling test can be time-consuming. Moreover, you always work in the past, which makes it more difficult to make corrections or adjustments. That is why your tax data is analyzed on an ongoing basis under continuous monitoring. In each period, random items are selected from your accounts and records, which are then checked. If an error or deviation in the data is found, you can immediately correct it and also tighten the internal control measures. If no errors are found, you can reduce the number of items to be checked in the following period.

## What are the benefits?

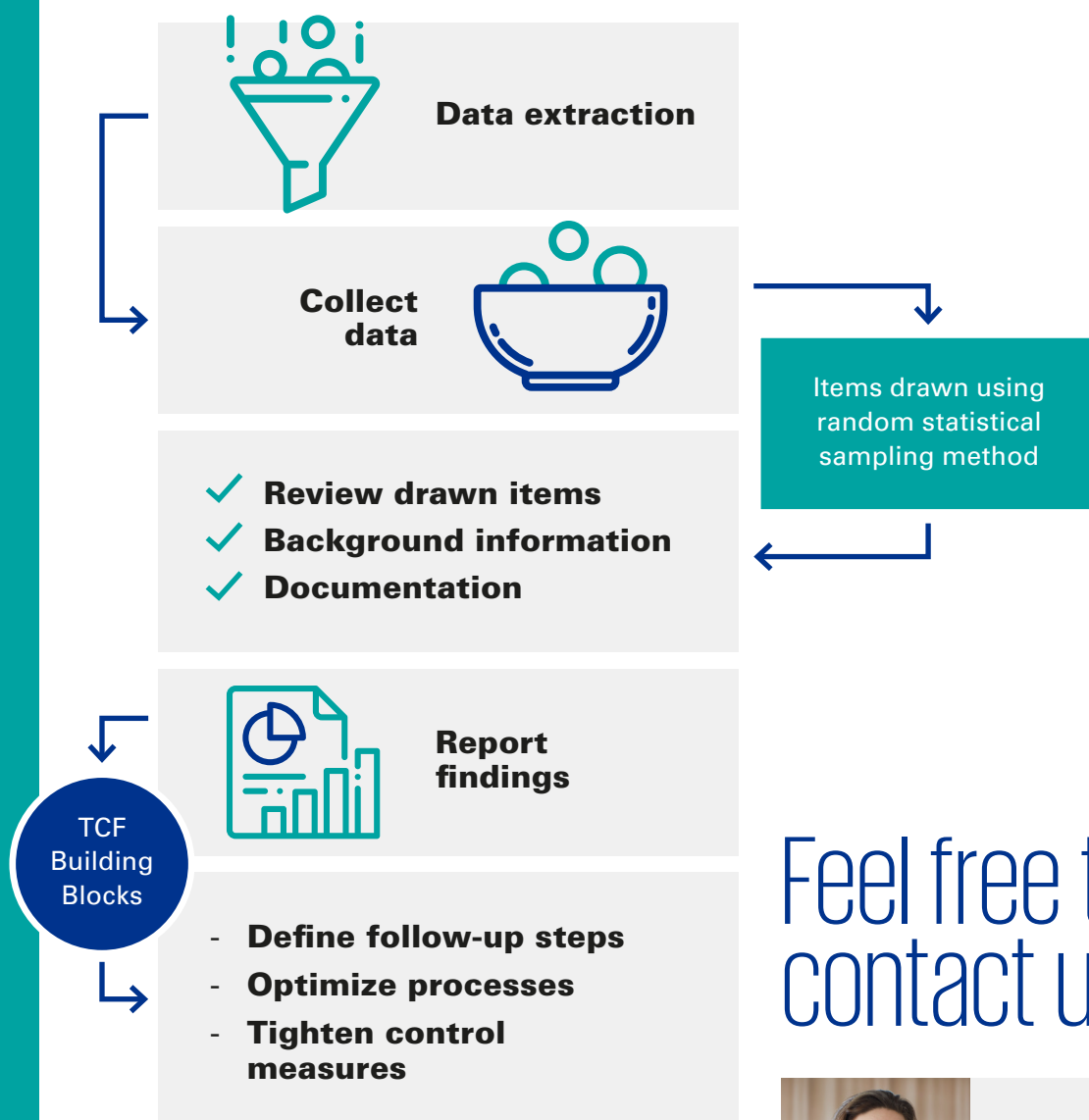
- You can integrate continuous monitoring into your normal control processes, which means it does not take a lot of extra time.
- Continuous monitoring is based on a proactive approach: you are in control and thus prepared for any audits by or questions from the Dutch tax authorities.
- By having real-time insight into errors or deviations in your accounts and records, any corrections can be made immediately.
- Your employees are forced to look critically at the drawn items, are aware of the potential tax risks and know when to raise the alarm.
- Continuous monitoring can be applied to all taxes.
- The Dutch tax authorities have repeatedly stated that they are in favor of this method, as it minimizes audits.



# How can we help you?

We would be pleased to help you set up and implement continuous monitoring. We draw up a project plan and work it out together with you. In addition to this, we ensure that the software is used correctly, provide explanations and instructions and act as a help desk. We also review the assessed items in terms of tax content and, if necessary, discuss this with the Dutch tax authorities. In this way we provide you with the assurance that all transactions are processed correctly.

**Do you want to be in control of your tax?  
Then please contact us.**



## Feel free to contact us



**Marieke Herber**  
*Senior Tax Manager*

✉ [Herber.Marieke@kpmg.com](mailto:Herber.Marieke@kpmg.com)  
☎ +31 (0)88 909 3156